



Four Zone / Eight Zone CONVENTIONAL WATER LEAK DETECTION SYSTEM *Product Guide*

Safeguard your organization
with a reliable and proven
water leak
detection system





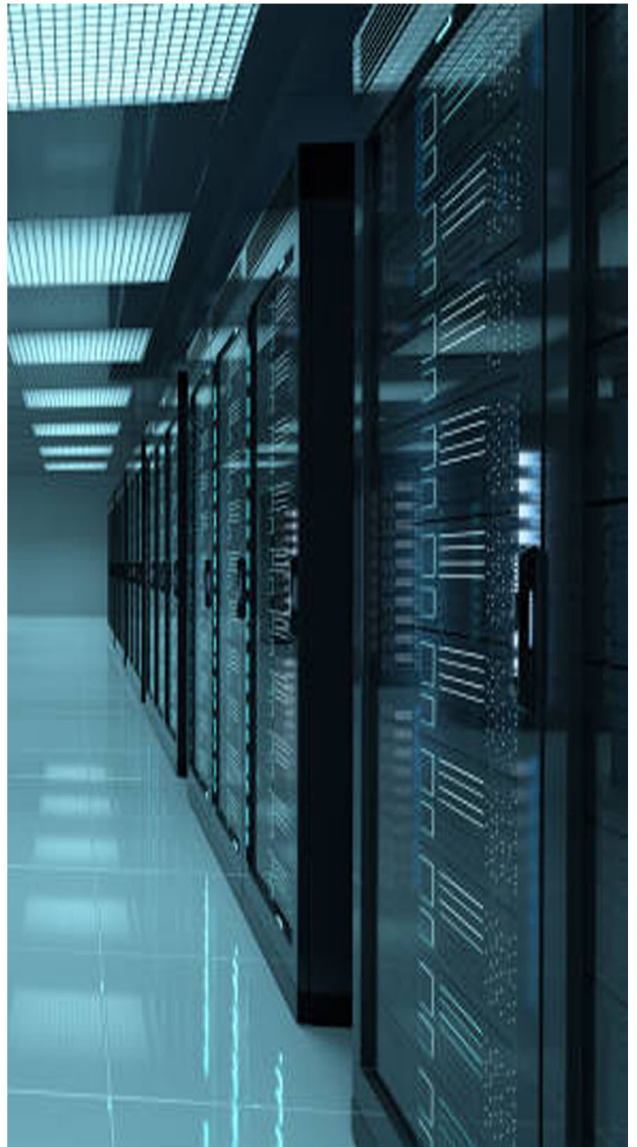
Briotronix offers an effective environment monitoring solutions for problems related to water leak in **server, hub rooms and office spaces**.

The compact device with its intelligent sensor cables monitor, detect and communicate the presence of water via local audio and visual alarms to the administrators.

All basic device functionality is available from the LCD screen — configure, monitor, locate, and acknowledge leaks from the front panel.



HUB ROOMS



SERVER ROOM

Salient Features:

- The panel equipped with LCD Display can monitor 4 Zones. There is an alternate model which can accommodate 8 Zone. Zone names can be configured
- The panel is equipped with soft membrane keypad for navigation.
- Input to water leak cable is an isolated Ac supply which ensures the cable will not be subject to oxidation and erosion over time avoiding the degradations problems associated with DC system.
- Access the device remotely through BMS via MODBUS protocol.
- 4 X 20 LCD display for zone configuration, status of leaks in different zones along with LED display status for all zone.
- In the event of any abnormal condition or malfunction, it activates an alarm that has to be acknowledges physically to reset the same.





Technical Specifications:

Supply Voltage:	230V AC – 50Hz +/- 10 %
LCD Display:	Yellow Green backlit LCD screen
Audible Alarm	Buzzer to indicate Leak
Visual Alarm	Alarm will be indicated on LCD screen and can be seen on BMS post integration
Communication	RS-485 Modbus Protocol
Event Logging	Up to 100 Events
Working Temperature	0 to 50 Deg C (32 Deg to 122 Deg F)
Water leak Cable (Min. Length)	5m (16.6ft)
Water leak Cable (Max. Length)	Upto 50 m (164 ft)
Output LED indication	
Power on	Green LED
Alarm	Red LED
Fault	Amber LED
Sensing Cable:	
Leader Cable	5 Meters
Sensing Cable Length	10,15,20,25 Meters (to be ordered separately) Custom lengths available on request *
Panel Dimensions:	265mm W X 155 mm H X 80 mm D
Panel Weight:	1.75 Kg
Mounting	Wall Mount
Certifications	CE Certified

